

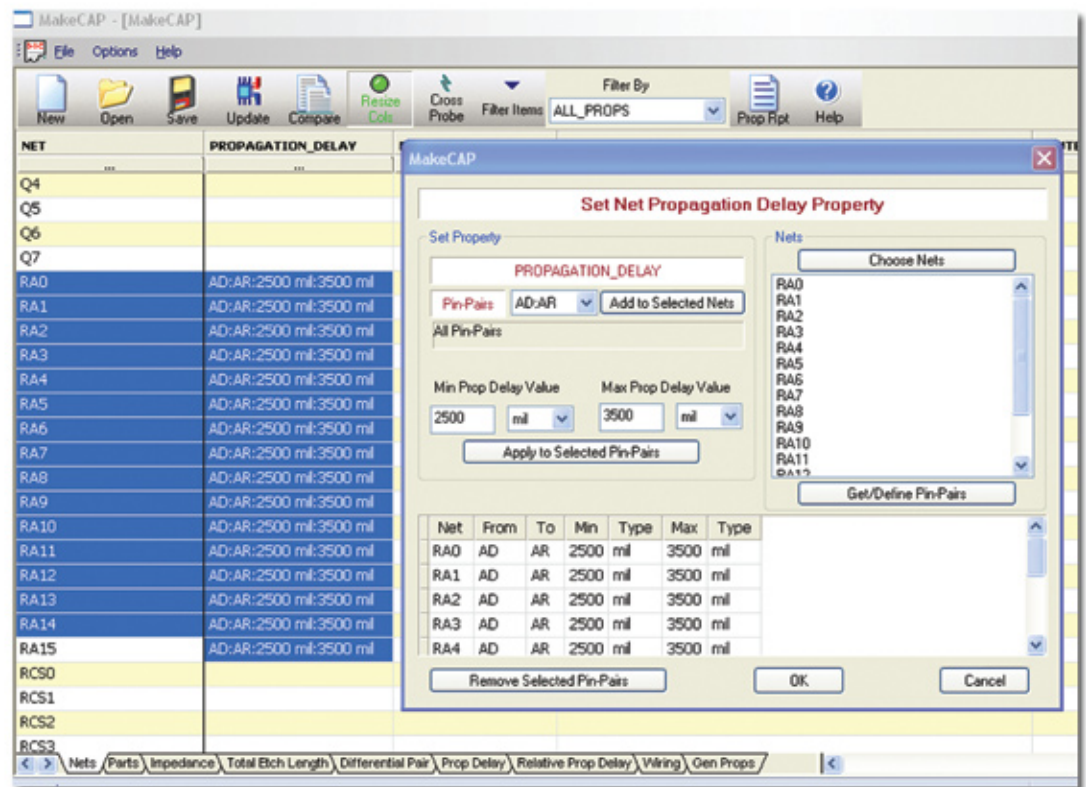
MakeCAP Power Property Editor

Drive Cadence high-speed PCB design flow

MakeCAP Power Key Features

- Apply new properties to multiple nets & parts; edit existing properties; use wildcard searches
- Retain selections of nets or parts. Once selected, you can apply other properties to the same collection of objects without re-selecting
- Define values and objects with perfect syntax
- Easily embed net, parts and high-speed properties into OrCAD Capture schematics
- Generate full net and part property reports. All MakeCAP reports are available as TAB-delimited text to be archived, shared and read in Excel or a text editor
- Define differential pairs and rules. Built-in validation will not allow conflicting entries to be created. Dynamic graphical display for differential pair properties
- Create pin-pairs from displayed pin lists. Full support for matched groups, min/max propagation delay and relative propagation delay
- Cross-probe from MakeCAP to an open schematic in OrCAD Capture and Cadence Allegro® Design Entry CIS

As designs become more complex and project timelines more compressed, it's important to identify opportunities to enhance current design processes. MakeCAP Power integrates with the Cadence® high-speed PCB design flow to easily embed high-speed properties into Cadence OrCAD® Capture schematics in a fraction of the time.



Click and drag to highlight the desired nets in the properties spreadsheet view. Right-click and the integrated database form pops up for defining your properties and rules

Easily embed high-speed properties into Cadence OrCAD Capture schematics

MakeCAP technology provides a powerful set of capabilities to aid designers in schematic property entry. This interoperability optimizes the capabilities of OrCAD Capture, allowing engineers to embed the properties needed to drive the Cadence PCB design flow.

MakeCAP, designers can add new properties to a schematic database, edit existing properties, define values and objects with perfect syntax, select nets and parts, and perform wildcard searches. MakeCAP tools also provide built-in filters tailored for a smooth flow from schematic design to PCB layout.

MakeCAP technology works seamlessly with OrCAD technologies to allow engineers to enter properties without a complex learning curve. With

MakeCAP Power

Easily embed properties at the front-end schematic level

About DfM

EMA Design Automation is the exclusive reseller of MakeCAP products in North America. MakeCAP and MakeDO are part of the MakeGOOD product family from DfM, a Cadence Emerging Solutions Partner specializing in providing cost-effective software solutions to support the Cadence PCB design flow. DfM supports users of Cadence Allegro PCB Router with autorouting services, training, and applications consulting services.

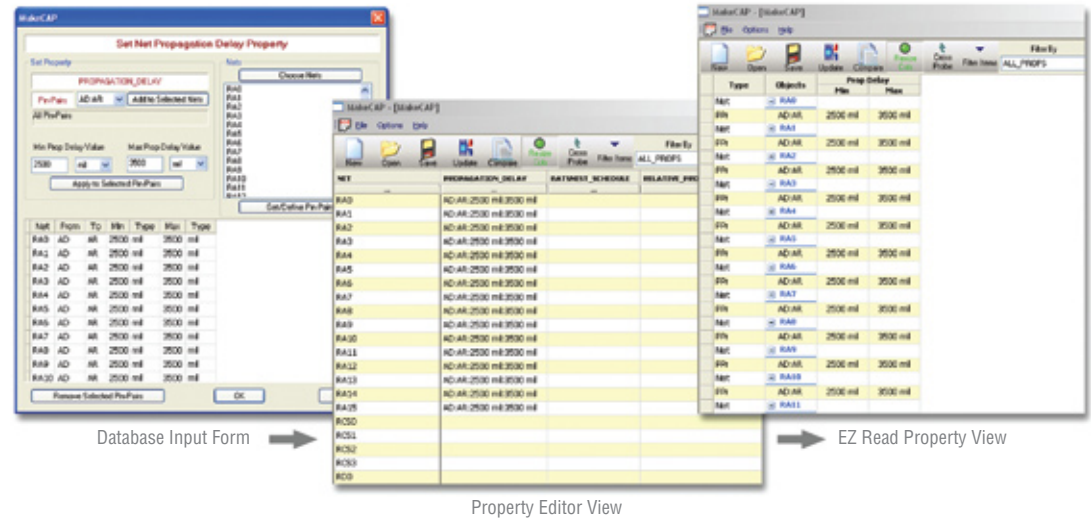
For More Information

For sales and pricing information contact EMA Design Automation, a Cadence Channel Partner.

EMA Design Automation, Inc.
225 Tech Park Drive
Rochester, New York 14623

Phone: 585.334.6001
Fax: 585.334.6693
eMail: info@ema-eda.com
Web: www.ema-eda.com

MakeCAP allows engineers working within the OrCAD Capture schematic to easily embed the high-speed properties needed to drive the Cadence high-speed PCB design flow.



Schematic linked spreadsheet view

MakeCAP introduces a new, innovative GUI to display properties in a database linked spreadsheet view. All cells tie directly to an OrCAD Capture database, ensuring data integrity. Engineers can select from the available data objects for assigning values. Multiple objects can be selected using wildcard searches and pick lists. Entries are error-free, and all Property Editor syntax is perfectly defined.

Cross-probing

Properties included in the OrCAD Capture Property Editor are supported in MakeCAP Power. MakeCAP uses the OrCAD DSN native binary schematic file as its input and can operate as a standalone tool or in conjunction with OrCAD Capture. This close integration allows users to cross-probe between MakeCAP and the open OrCAD Capture Schematic. Objects selected in MakeCAP will be highlighted within OrCAD Capture. Using the OrCAD Capture database as the source, MakeCAP allows the creation of pin-pairs for complex propagation timing properties in the OrCAD Capture Property Editor.

Design comparison features

MakeCAP includes a built-in function for comparing properties and objects between any two versions of an OrCAD Capture schematic. Engineering change order (ECO) reporting and tracking are easy with immediate visual highlights of adds, deletes and changes, as well as text reports for change tracking. The compare function provides a fast and easy way to spot differences between two versions of builds that show manufacturing or performance variances.

Versions of MakeCAP are available for Node, LAN and WAN application environments.

©2008 EMA Design Automation, Inc. All rights reserved in the U.S. and other countries. EMA Design Automation and the EMA logo are registered trademarks of EMA Design Automation, Inc. Cadence, OrCAD, and Allegro are registered trademarks of Cadence Design Systems, Inc. DfM, MakeCAP and MakeDo are trademarks or registered trademarks of DfM. All other marks are the property of their respective owners.

