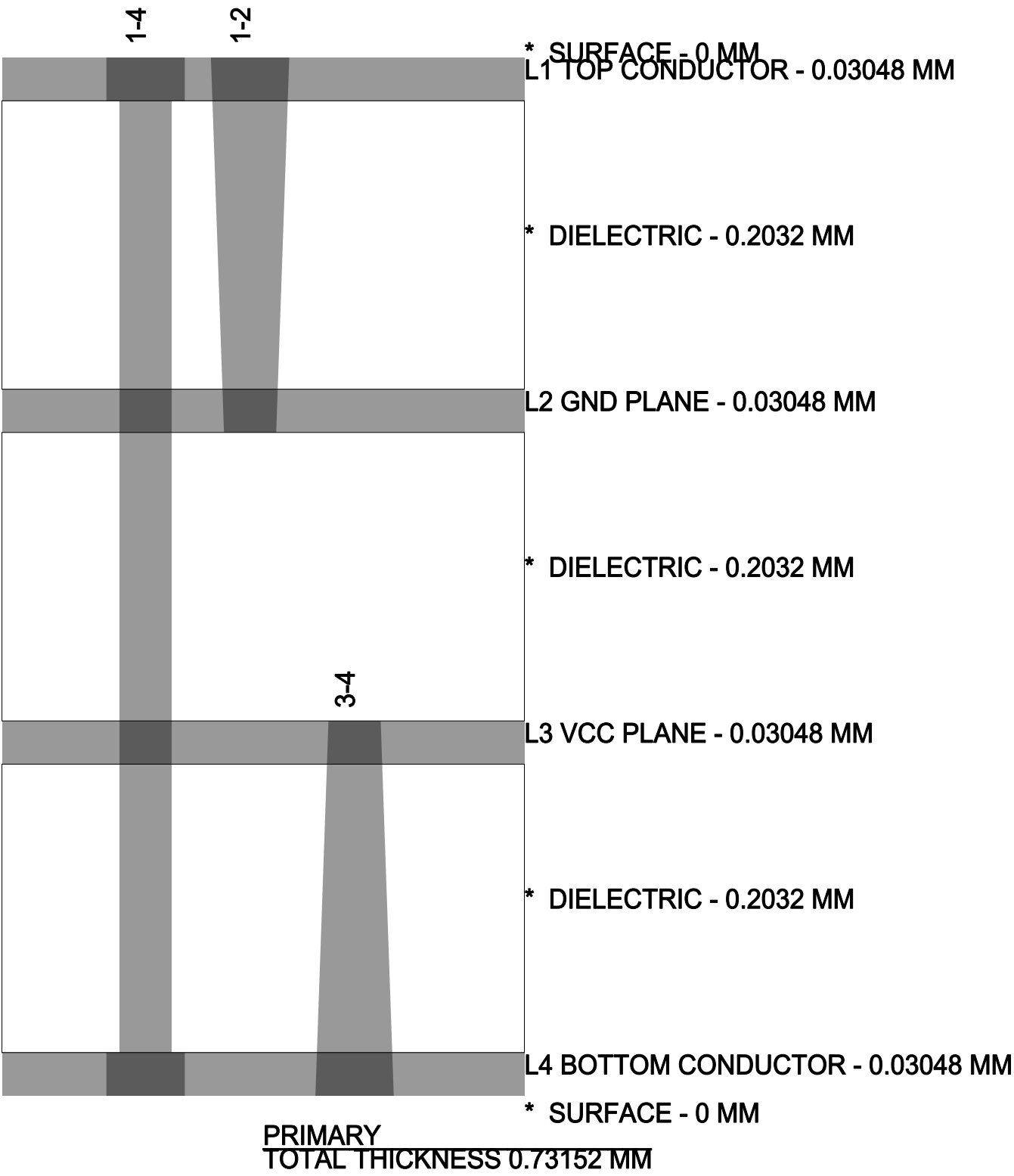


DRILL CHART 1-4			
ALL UNITS ARE IN MILLIMETERS (MILS)			
FIGURE	FINISHED_SIZE	PLATED	QTY
+	0.254 (10.000)	PLATED	68
⊕	2.540 (100.000)	NON-PLATED	3
TOTAL COUNT			71

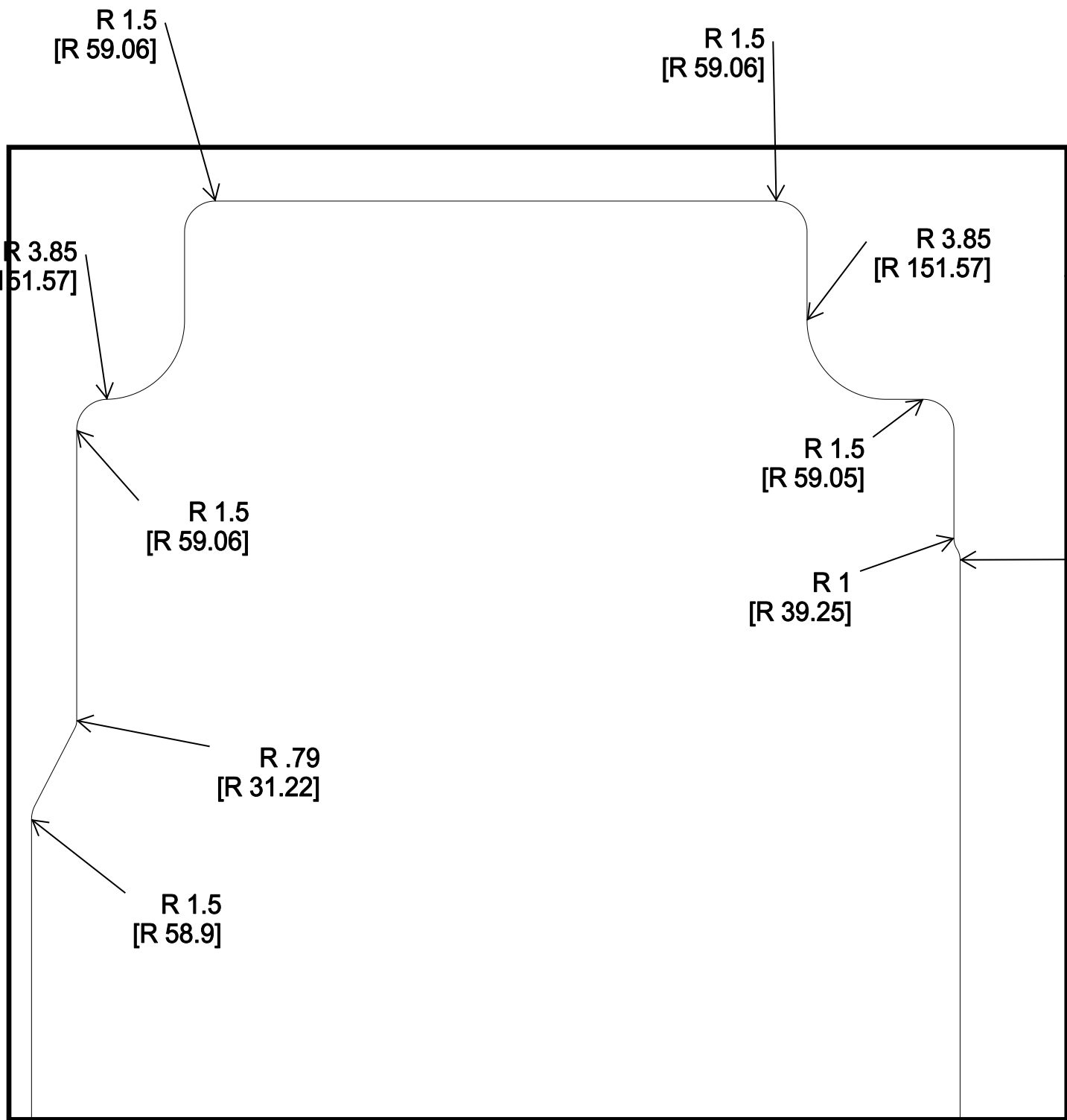


Stackup Table					
Units : MILLIMETER					
#	NAME	TYPE	MATERIAL	TOLERANCE	THICKNESS
		SURFACE	AIR	+0/-0	0
1	TOP	SIGNAL	COPPER	+0/-0	0.03048
		DIELECTRIC	FR-4	+0/-0	0.2032
2	GND	PLANE	COPPER	+0/-0	0.03048
		DIELECTRIC	FR-4	+0/-0	0.2032
3	VCC	PLANE	COPPER	+0/-0	0.03048
		DIELECTRIC	FR-4	+0/-0	0.2032
4	BOTTOM	SIGNAL	COPPER	+0/-0	0.03048
		SURFACE	AIR	+0/-0	0
TOTAL THICKNESS					0.73152

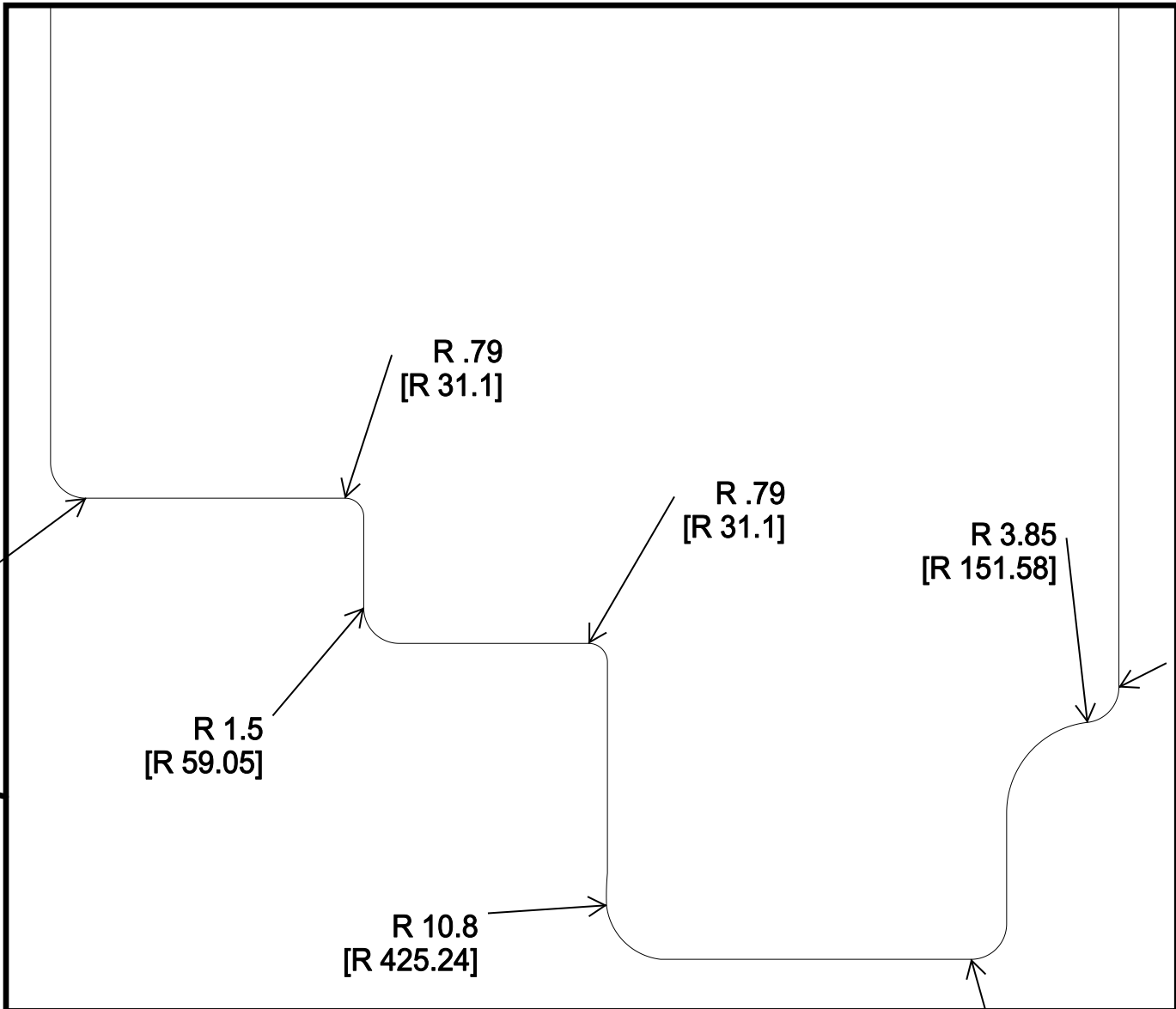
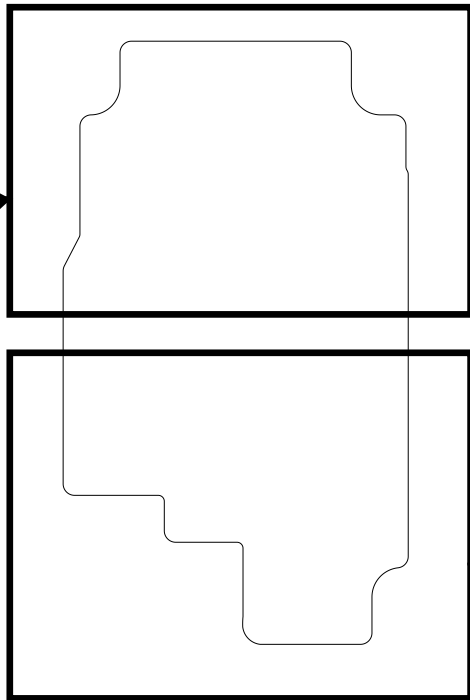
Notes:

- . All dimensions are in mm unless otherwise specified.
- . Fabricate PCB in accordance with IPC-6012A, Class2; per IPC-6011 using customer supplied data files.
- . Primary Side of the board is shown: Top
- . Materials: Plastic sheet laminated, glass base, epoxy resin type FR4 series or equivalent per IPC-410 with Tg >= 170 DEG C and a TD >= 330 DEG C. Base thickness on all layers per stackup detail.
- . Finished board shall have a UL rating of UL 94V-0.
- . Finished hole sizes are shown in drill chart.
- . Apply green LPI solder mask, matte finish, conforming to IPC-SM-840, Class T over bare copper onto outer surfaces using appropriate artwork.

UNLESS OTHERWISE SPECIFIED DIMENSIONS ARE IN mm TOLERANCE ON ANGLE +/- 5° 2PL +/- 0.05 3PL +/- 0.050 INTERPRET DIM AND TOL PER ISO 10579: 2010		Title LiveDoc Tutorial	
FIRST ANGLE PROJECTION		Document Number EMA-1234	
Size D		Rev A	
Date: Tue, 14 May 2024 15:53:43 GMT		Sheet 1 of 8	



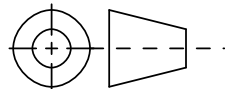
1: Top Detailed Dimensions



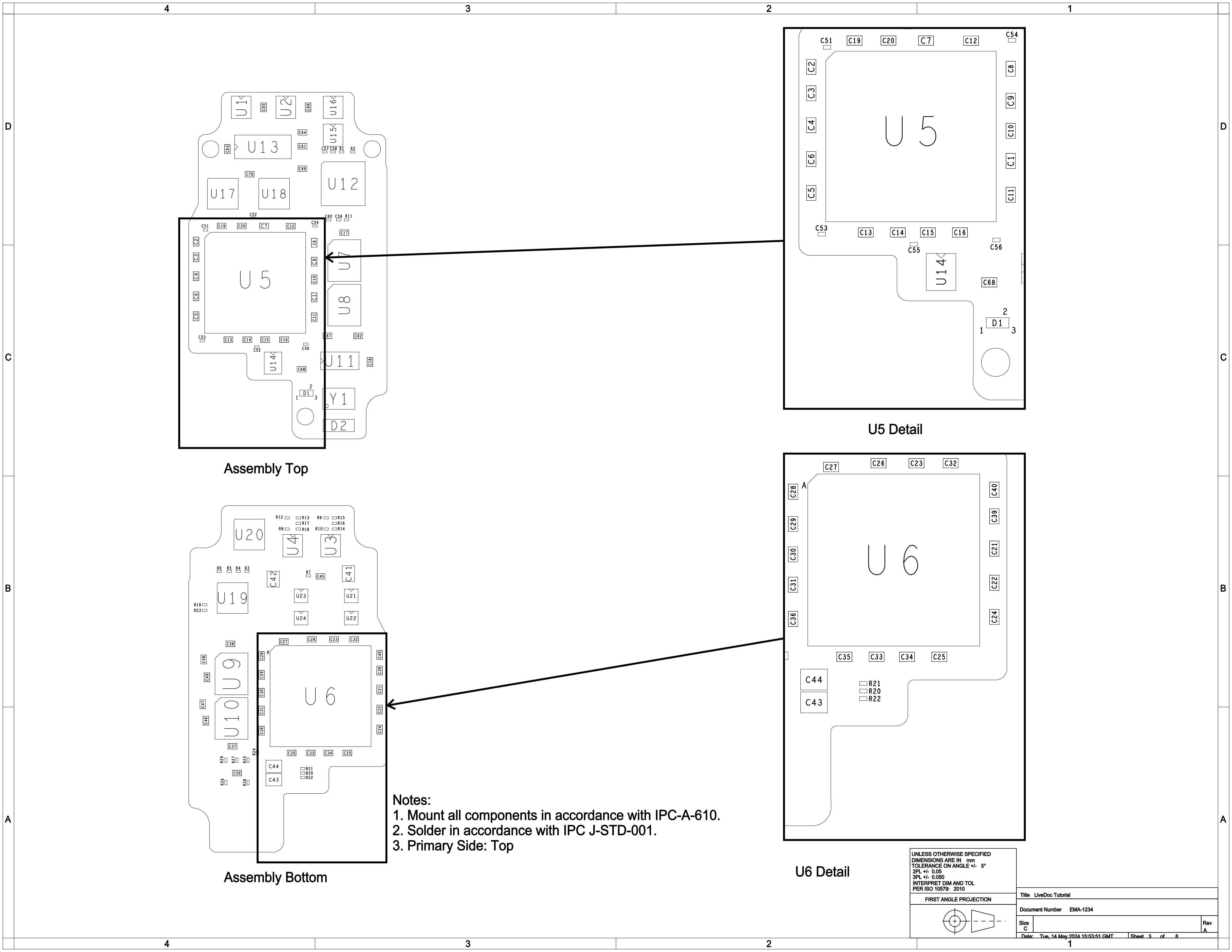
2: Bottom Detailed Dimensions

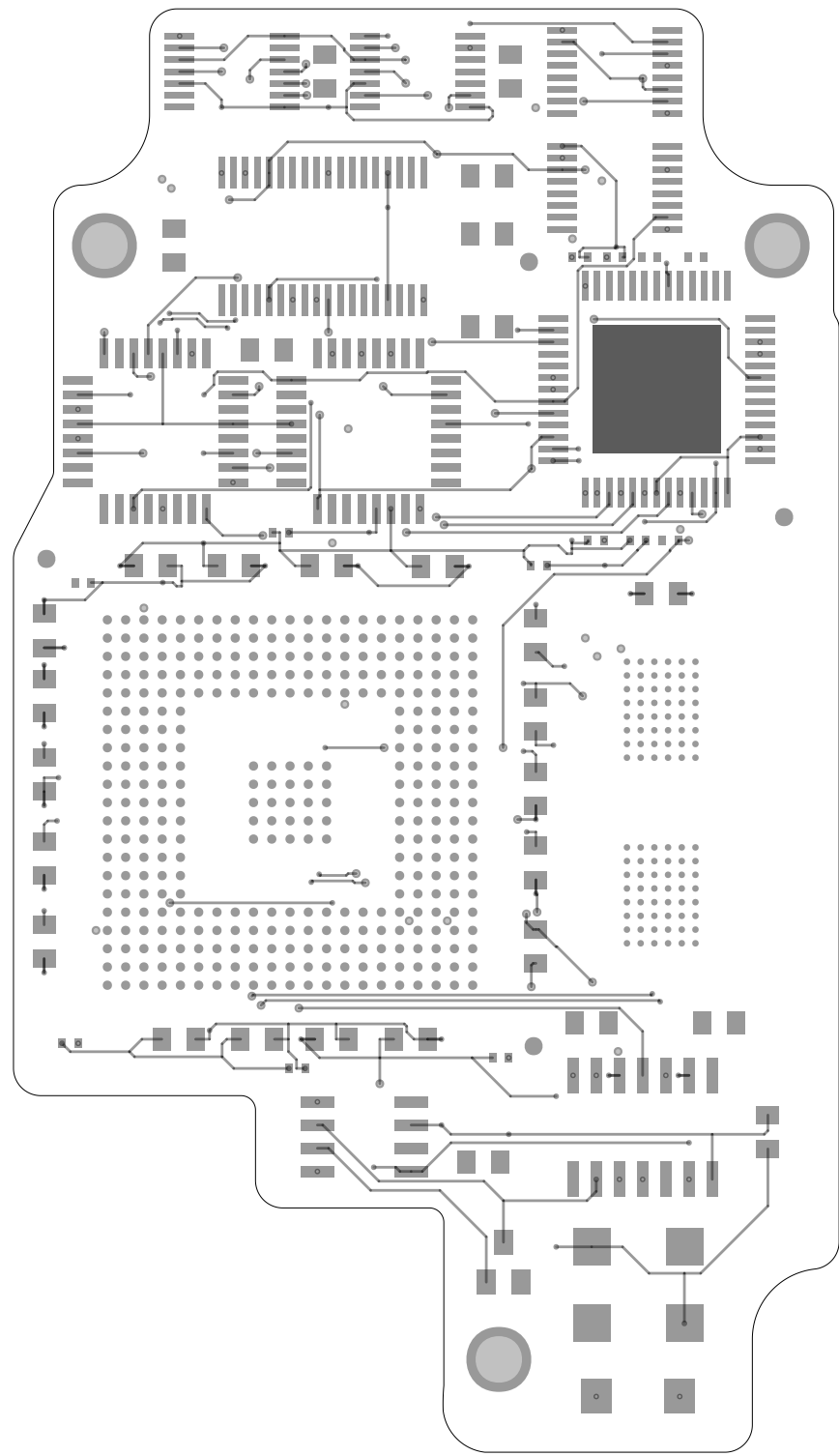
UNLESS OTHERWISE SPECIFIED
DIMENSIONS ARE IN mm
TOLERANCE ON ANGLE +/- 5°
2PL +/- 0.05
3PL +/- 0.050
INTERPRET DIM AND TOL
PER ISO 10579: 2010

FIRST ANGLE PROJECTION

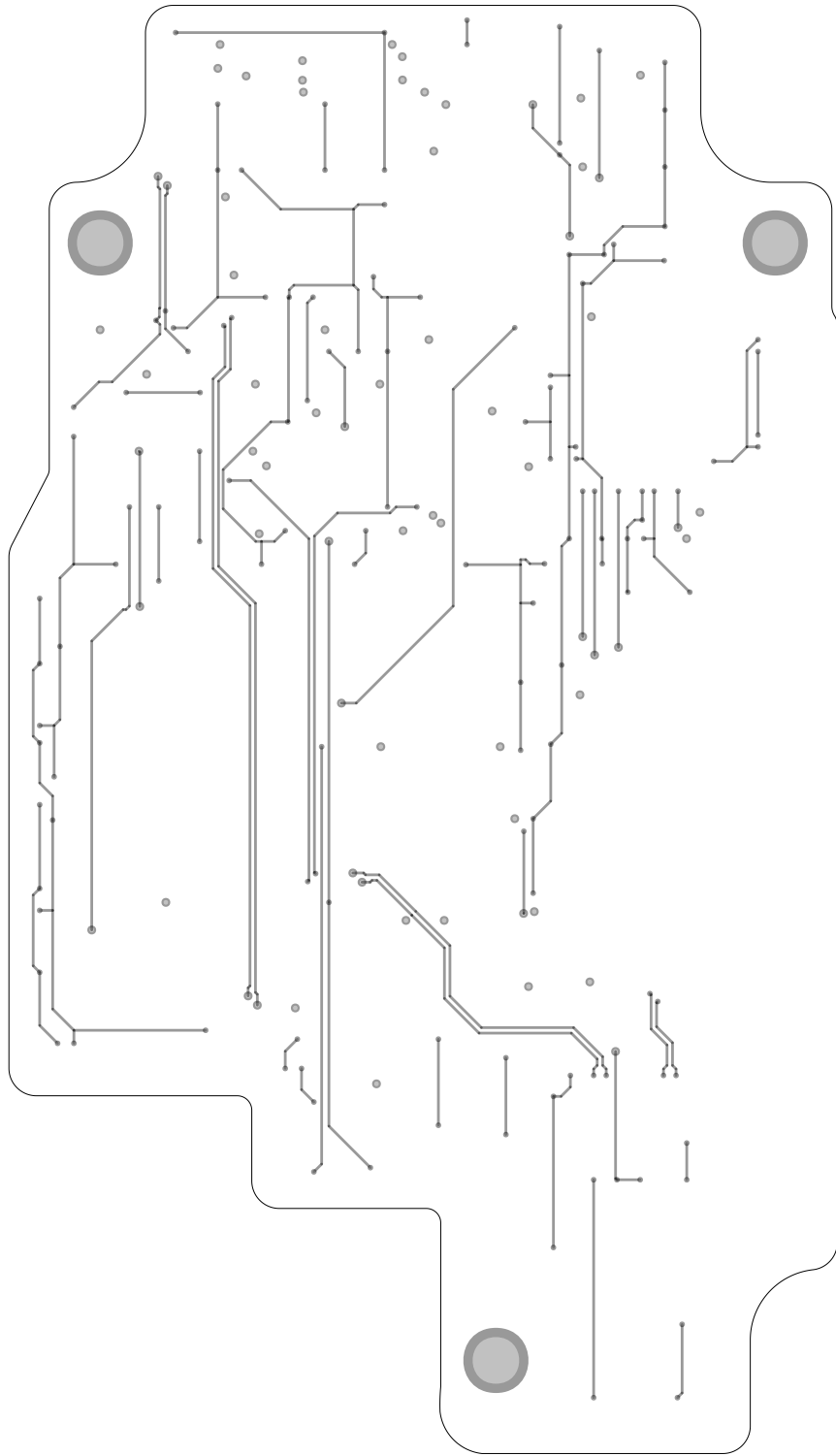


Title LiveDoc Tutorial		
Document Number EMA-1234		
Size C		Rev A
Date: Mon, 13 May 2024 12:36:38 GMT Sheet 2 of 8		





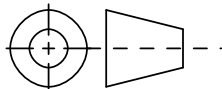
TOP: Layer 1



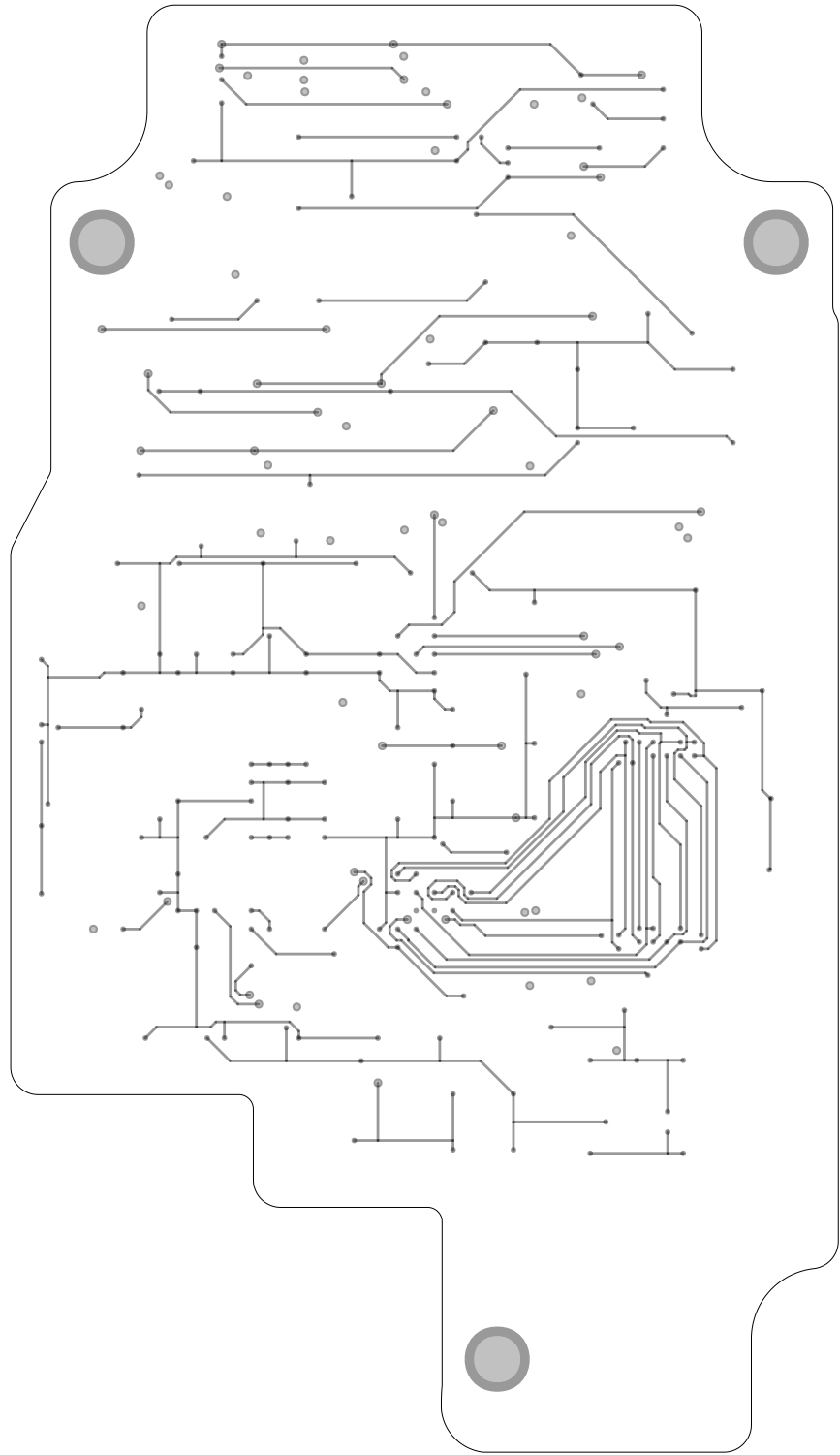
GND: Layer 2

UNLESS OTHERWISE SPECIFIED
DIMENSIONS ARE IN mm
TOLERANCE ON ANGLE +/- 5°
2PL +/- 0.05
3PL +/- 0.050
INTERPRET DIM AND TOL
PER ISO 10579: 2010

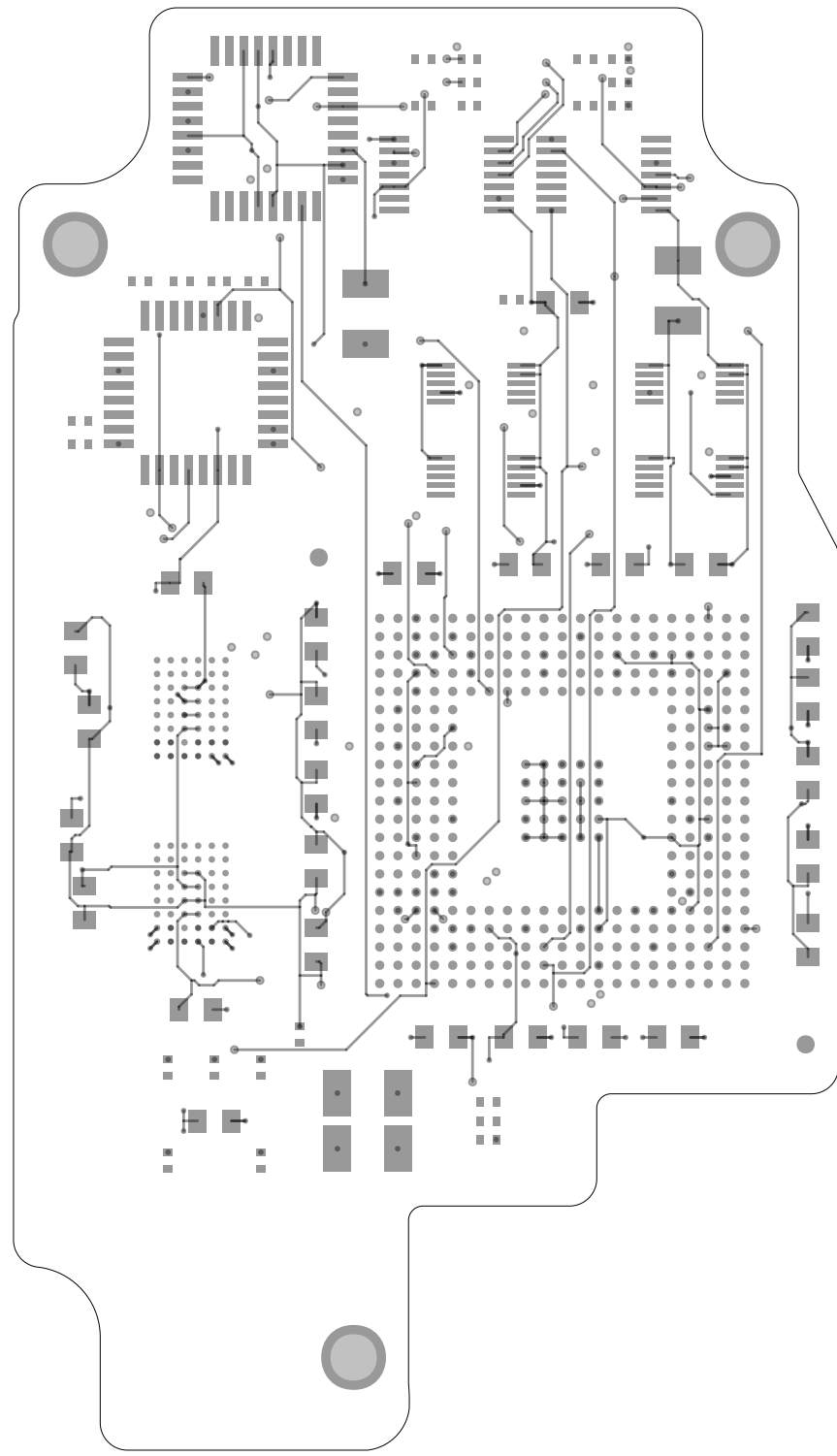
FIRST ANGLE PROJECTION



Title Core 1 Artwork		
Document Number EMA-1234		
Size C		Rev A
Date: Tue, 14 May 2024 17:11:29 GMT	Sheet 4 of 8	1



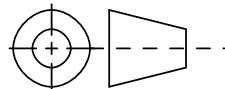
VCC: Layer 3



BOTTOM: Layer 4

UNLESS OTHERWISE SPECIFIED
DIMENSIONS ARE IN mm
TOLERANCE ON ANGLE +/- 5°
2PL +/- 0.05
3PL +/- 0.050
INTERPRET DIM AND TOL
PER ISO 10579: 2010

FIRST ANGLE PROJECTION



Title Core 2 Artwork

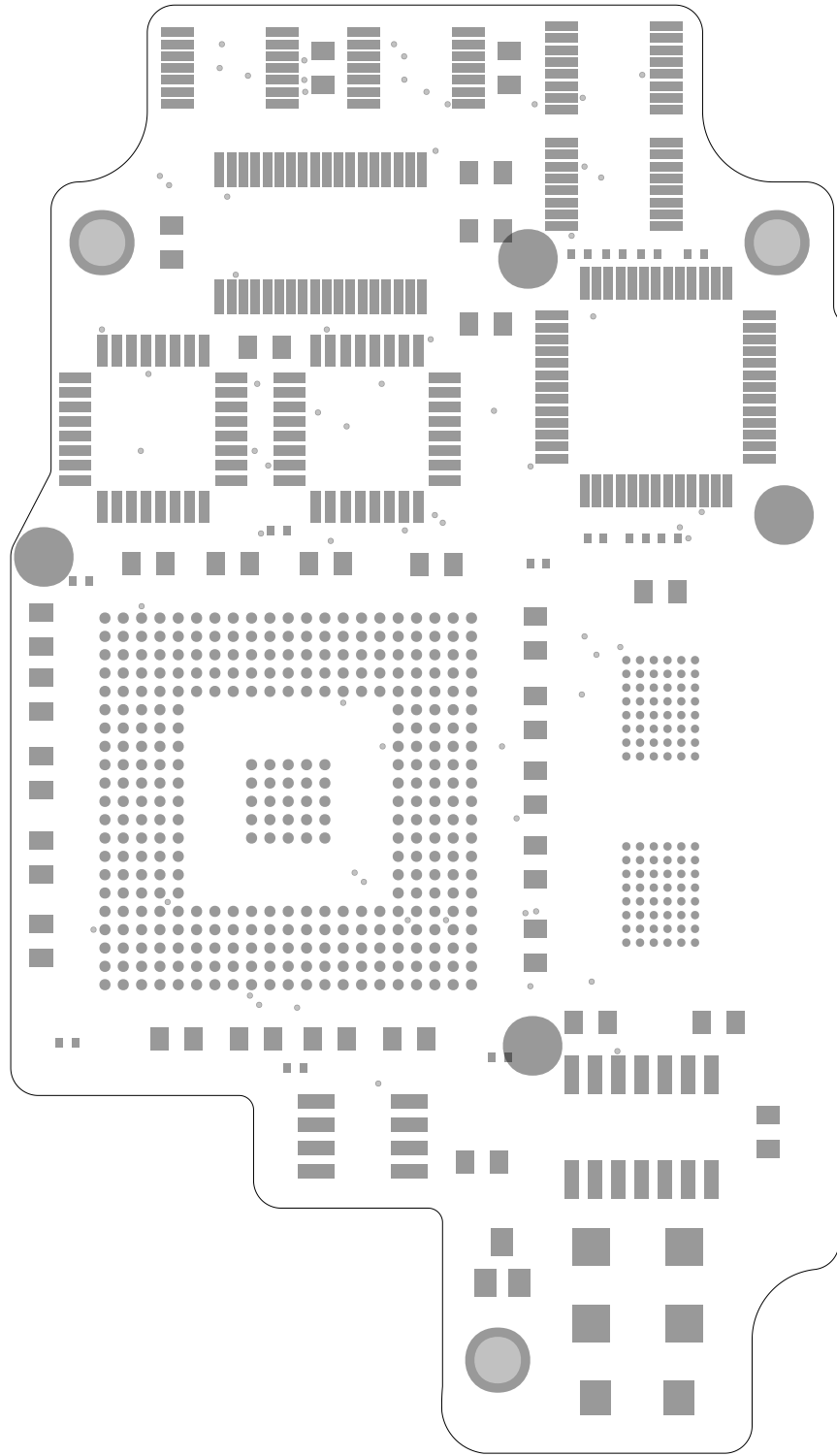
Document Number EMA-1234

Size
C

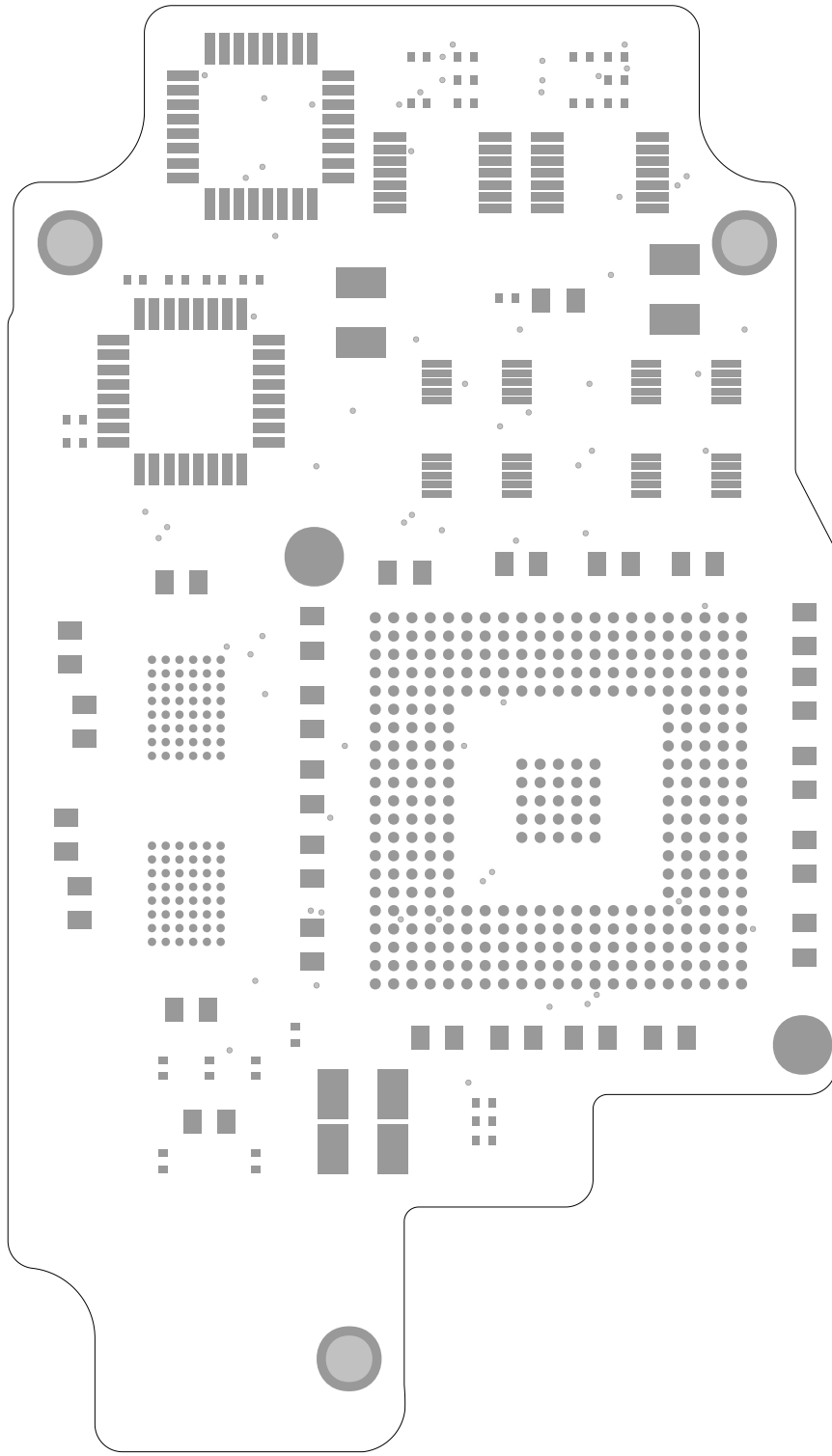
Date: Tue, 14 May 2024 20:15:16 GMT

Sheet 5 of 8

Rev
A



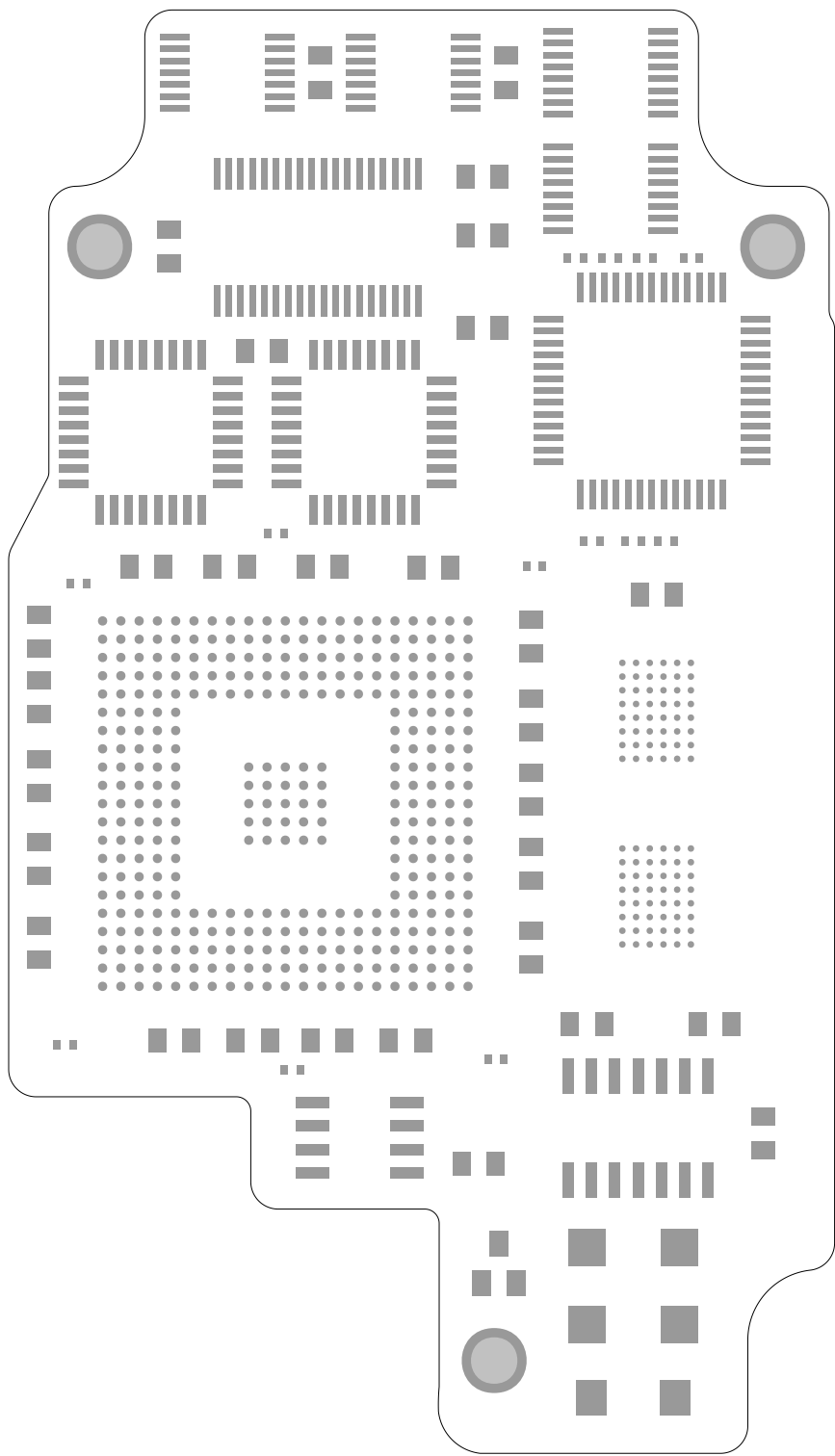
Soldermask Top



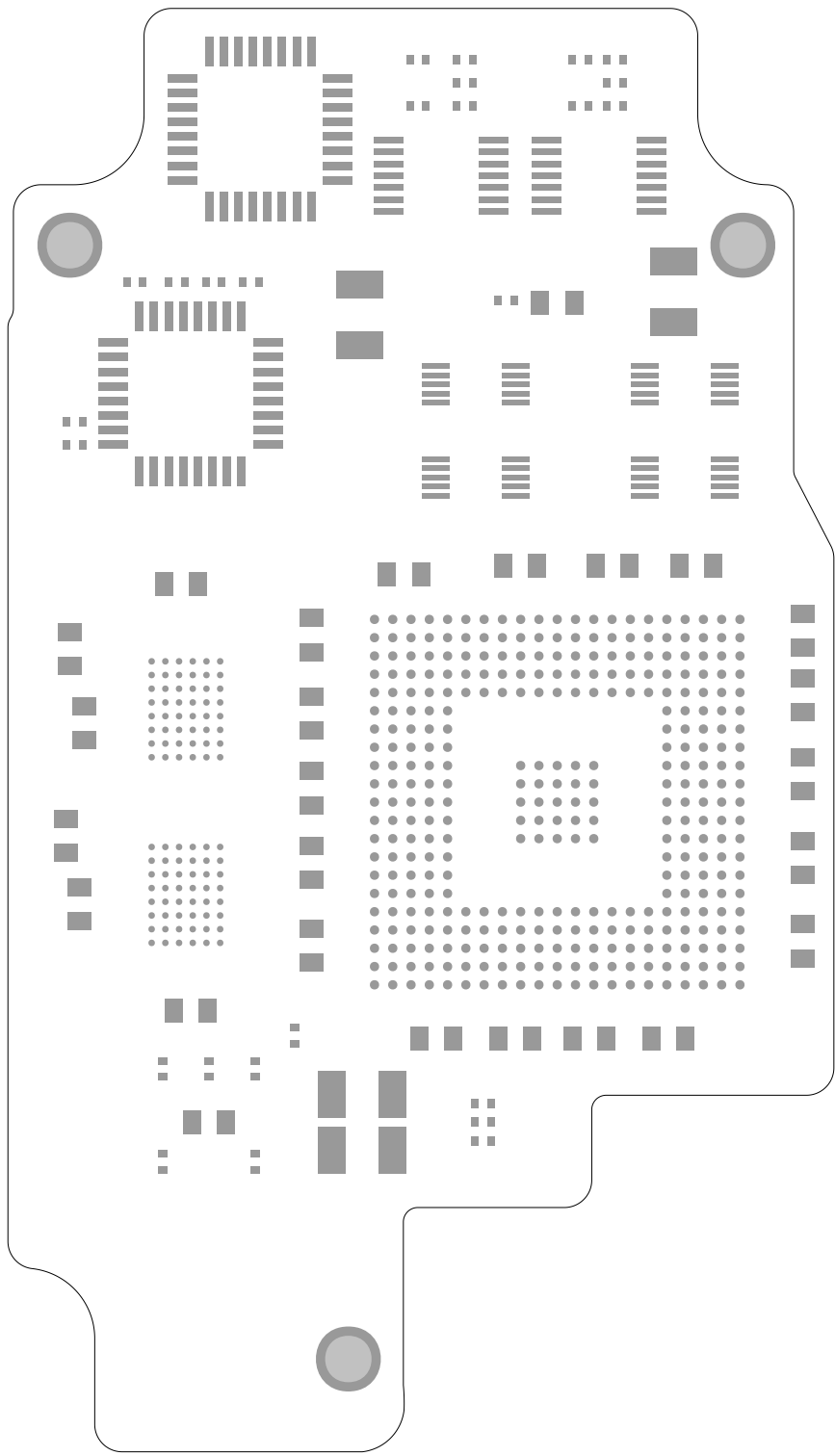
Soldermask Bottom

UNLESS OTHERWISE SPECIFIED
DIMENSIONS ARE IN mm
TOLERANCE ON ANGLE +/- 5°
2PL +/- 0.05
3PL +/- 0.050
INTERPRET DIM AND TOL
PER ISO 10579: 2010

FIRST ANGLE PROJECTION		
Title Soldermask Artwork		
Document Number EMA-1234		
Size C		Rev A
Date: Tue, 14 May 2024 19:12:07 GMT	Sheet 7 of 8	1



Solderpaste Top



Solderpaste Bottom

UNLESS OTHERWISE SPECIFIED
DIMENSIONS ARE IN mm
TOLERANCE ON ANGLE +/- 5°
2PL +/- 0.05
3PL +/- 0.050
INTERPRET DIM AND TOL
PER ISO 10579: 2010

FIRST ANGLE PROJECTION

Title Solderpaste Artwork		
Document Number EMA-1234		
Size C		Rev A
Date: Tue, 14 May 2024 19:22:58 GMT	Sheet 8 of 8	1